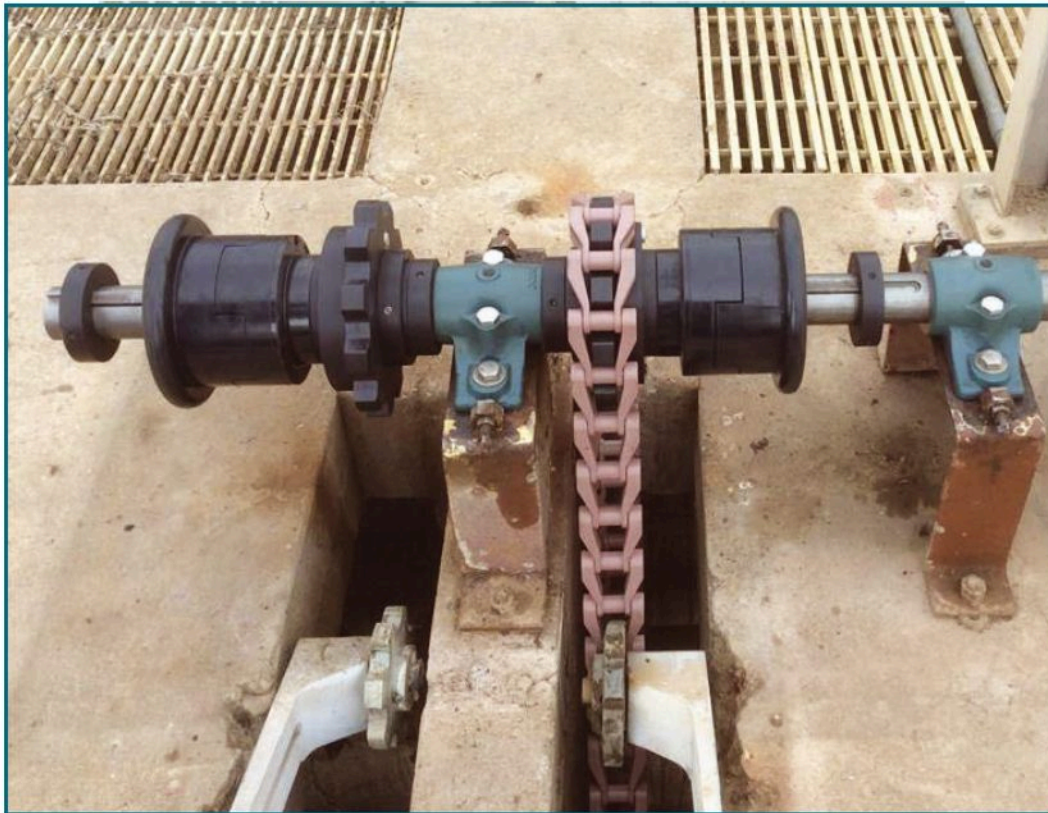


## Non-Metallic Jaw Clutch / Shearpin Sprocket Assembly



HEAVY Duty Jawclutch / Shear Pin Sprocket assemblies from TERSON feature Cast Nylon bodies and sprockets with a universal engagement design. All Non-Metallic construction means no lubrication - no grease, no zerk fittings, eliminates possibility of corrosion of the shaft causing the sprocket to freeze to the shaft. Provided with aluminum T-6 shear pins sized to the appropriate neck diameter for the specific application, available with 10 and 11 tooth sprockets. Use with cast iron, stainless steel or Non-Metallic chains. Lightweight and easy to install with standard keyway and set screw engagement. Each shear pin Jaw Clutch assembly comes with a trip arm for use with optional limit switch to signal shear pin has tripped. The omni-directional hub design insures smooth engagement of the drive hub when placed in service with either direction.