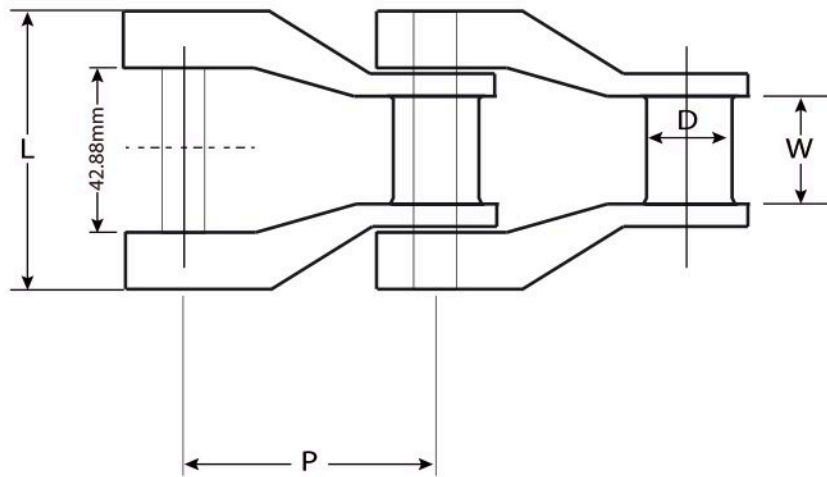


NH78 Non-Metallic Drive Chain



NH78 Non-Metallic Chain is a strong, yet light weight alternative to metallic or cast drive chains. Directly interchangeable with 78 series chains and requiring no lubrication, the NH78 chain can be used with cast, plastic or stainless steel sprockets for clarifier drives or drag conveyor applications. Our NH78 drive chain is made of a glass reinforced nylon material providing additional strength and resistance to elongation. It features a 316SS knurled pin that is easy to install with no cotters or clips. The link material also includes UV inhibitors to resist degradation from sun exposure.



Non-Metallic Drive Chain

Chain No.	Units	Chain Pitch	Width	Diameter	Height	Pin			Link Material	Working Load	Average Ultimate Strength	Average Weight
		P	W	D	H	d	L	Material				
NH78	inch	2,609	1,125	0,875	1,125	0,375	2,906	316SS	Glass Reinforced Nylon	1800 lbs	4000 lbs	1,41 lbs/ft
	mm	66,27	28,58	22,23	28,58	9,53	73,81			8,01 kN	17,79 kN	2,10 kg/m
NH78	inch	2,609	1,125	0,875	1,125	0,375	2,906	316SS	Nylon	1400 lbs	3000 lbs	1,41 lbs/ft
	mm	66,27	28,58	22,23	28,58	9,53	73,81			6,23 kN	13,34 kN	2,10 kg/m